

PART OF N.W. 1/4, SEC. 27, T.6N., R.1W., S.L.B. & M.
ADDITION TO ALBERTSON CENTER
 AMENDED PLAT
 A COMMERCIAL SUBDIVISION
 IN OGDEN CITY
 SCALE: 1" = 30'

153

TAXING UNIT: 25

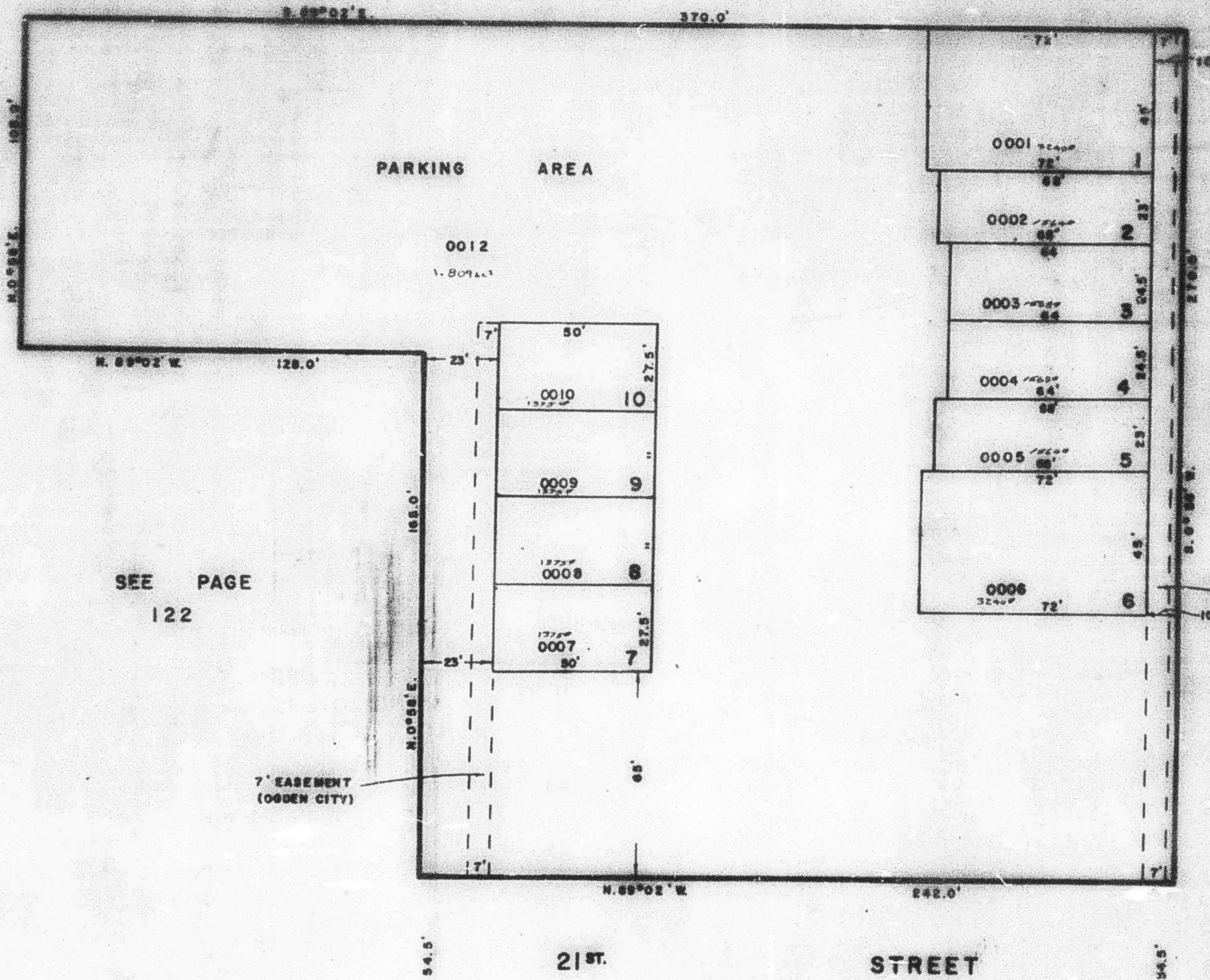
PREFIX: 13-153

EXCEPT WHERE OTHERWISE SHOWN
 ALL LOTS OWNED BY:
 KEITH E. GARNER

SEE PAGE 122

SEE
 PAGE
 122

HARRISON
 BLVD.



SEE PAGE
 122

SEE PAGE
 122

7' EASEMENT
 (OGDEN CITY)

7' EASEMENT
 (OGDEN CITY)

SEE PAGE 122

FOR COMPLETE ENG. DATA
 SEE ORIG. DEED PLAT IN
 BOOK 22, PAGE 98